

How to customize Reporting in Soffid

- [Using iReport](#)
- [Using JasperReports](#)

Using iReport

Steps

Once you have installed the Reporting add-on you must follow the following steps:

1. Download the iReport classes from Soffid.

1.1. Open the Reports screen.

Main Menu > Administration > Monitoring and reporting > Reports

1.2. Click on the "Reports definitions" tab.

1.3. Click on the hamburger icon.

1.4. Click on the "Download iReport componet" option and save in your computer the file.

1.5. Once you have saved the file, you need to customize the **hibernate.cfg.xml** file to point your development database.

```
<property
name="connection.driver_class">com.mysql.jdbc.D
river</property>
<property
name="connection.url">jdbc:mysql://172.20.0.2:33
06/soffid</property>
<property
name="connection.username">YOUR_USER</prop
erty>
<property
name="connection.password">YOUR_PASS</prope
rty>
```

2. Download the **iReport** designer from [sourceforge](https://sourceforge.net/projects/ireport/).

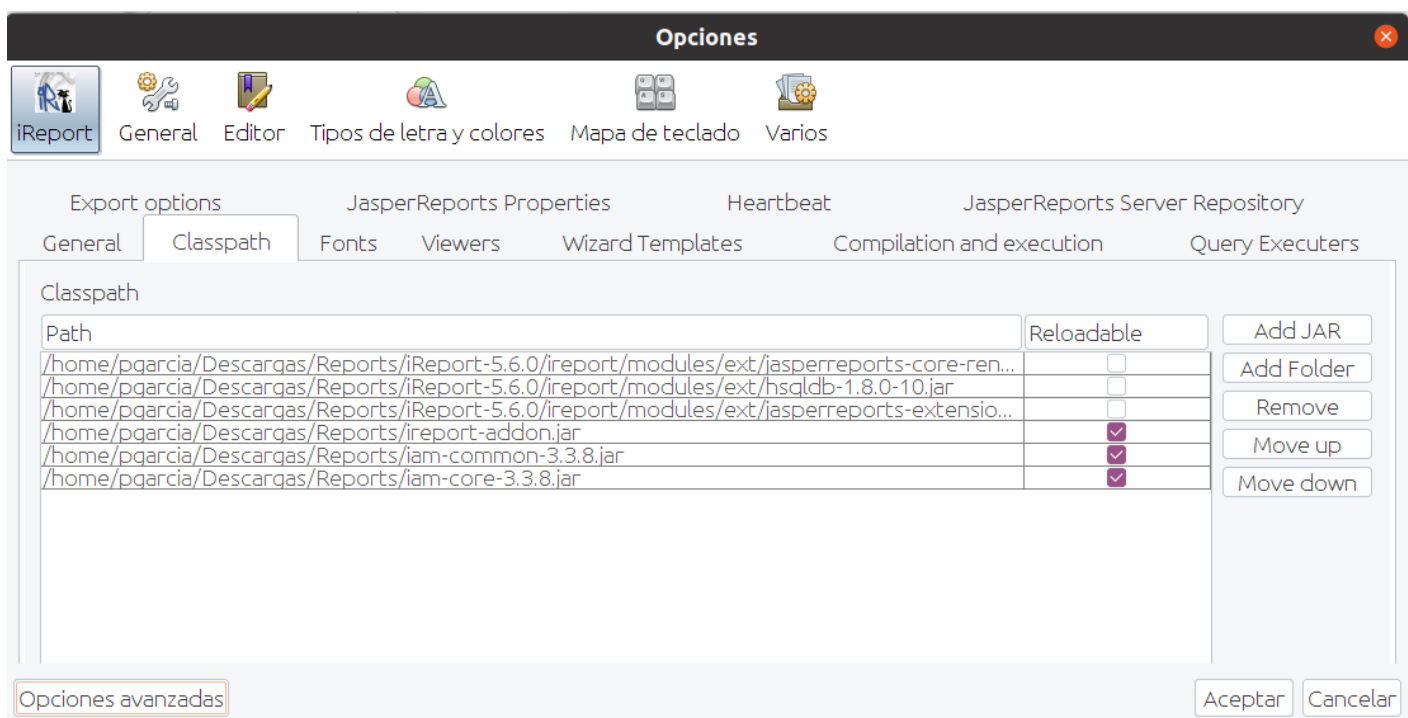
2.1. Execute iReport.

Be in mind, if you are using the proper Java version.

To execute iReport in Linux: `./ireport --jdkhome /usr/lib/jvm/jdk1.7.0_80/`

2.2. Add iReport addon jar, previously downloaded on step 1.4

Go to: `Tools > Options > Classpath` and then: **Add JAR**



5. Design your report, using the **hibernate connector** or open an existing one.

The data model documentation, including [E-R diagrams](#) is [here](#).

6. Upload your report to Soffid Console.

7. Execute or schedule it!!!

Using JasperReports

Introduction

Soffid provides an addon to execute a custom Jaspersoft report designer. Configure a new Soffid data adapter will be mandatory with the proper data to connect to Soffid console, it will not be necessary to configure the database connection.

Then you can use your custom Jasper report designer, it will be in charge to make REST requests to the Soffid console, and Soffid console will make the requests to the database.

Steps

Once you have installed the Reporting add-on you must follow the following steps:

1. Download the Report designer from the Soffid download page.

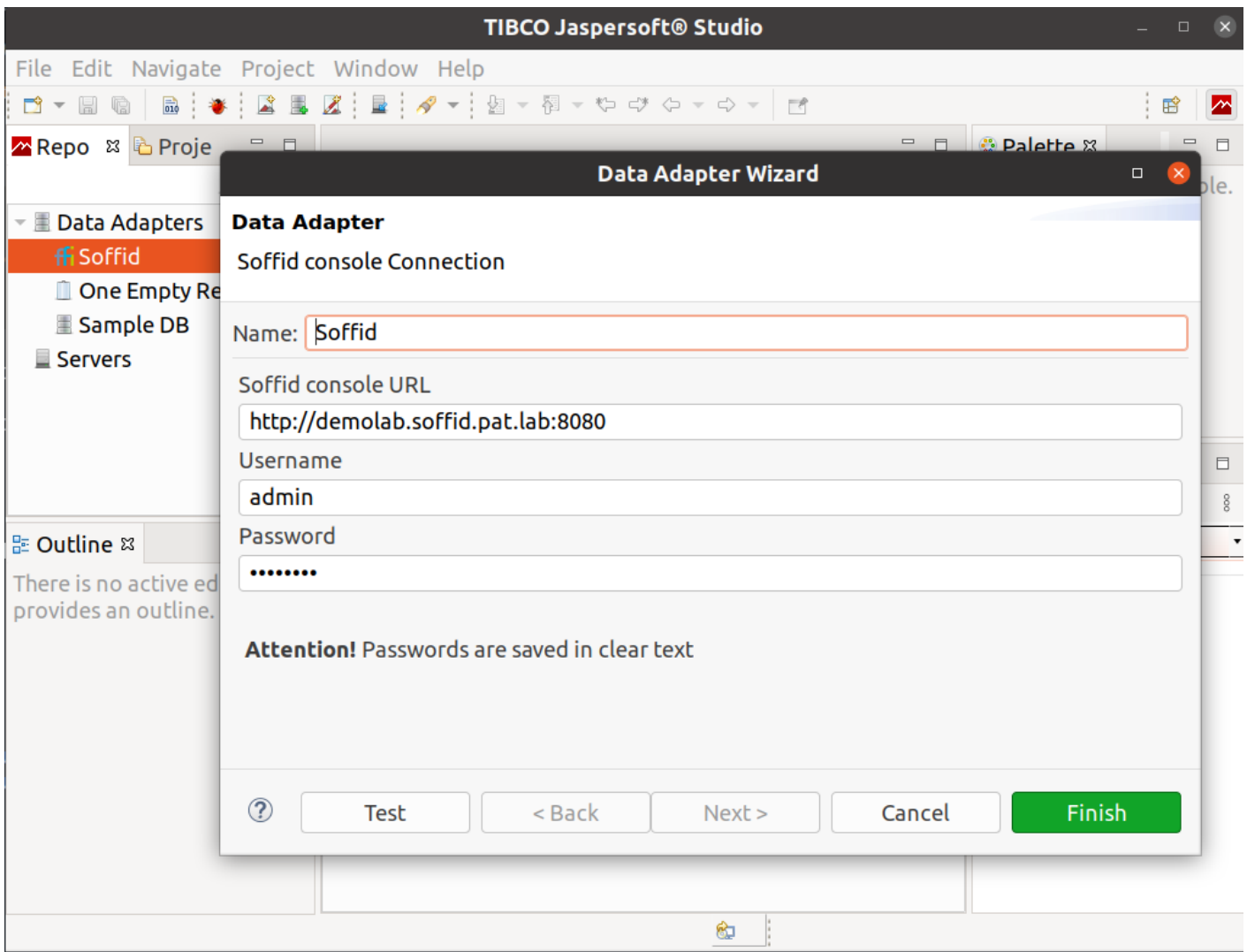
You could download in the following link <http://www.soffid.com/download/enterprise/> if you have Soffid user with authorization, or in the following <http://download.soffid.com/download/> by registering.

2. Open the custom Jaspersoft report designer.

```
root@soffid:/home/user/Descargas/jaspersoftstudio# ./Jaspersoft\ Studio
```

3. Add a new Soffid Data Adapter

- **Name:** data adapter name.
- **Soffid console URL:** your Soffid console URL.
- **User Name:** user to connect to Soffid Console.
- **Password:** password to connect with the user to Soffid Console.



4. Design your report or open an existing one.

The data model documentation, including [E-R diagrams](#) is [here](#).

5. Upload your report to Soffid Console.

6. Execute or schedule it!!!