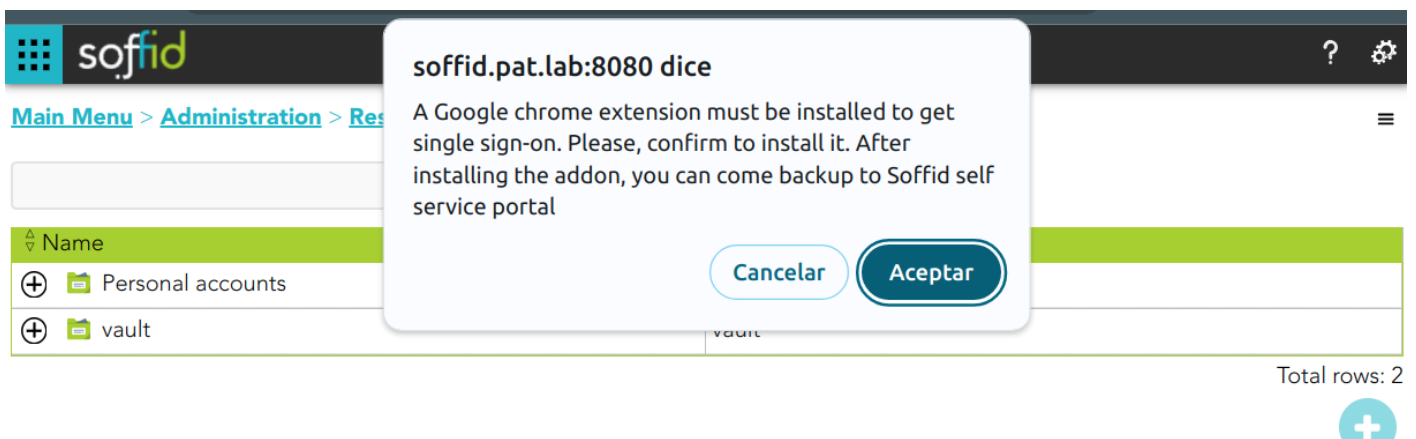


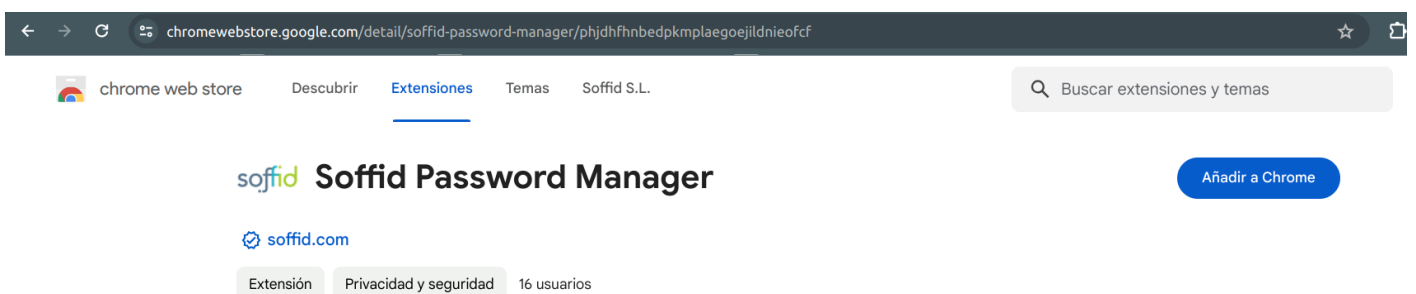
How to Install Password Manager?

Step-by-Step

1. The first time you access your Password Vaults, Soffid will ask you to install the **Soffid Password Manager extension**. This extensión is available for Chrome, Firefox, Edge, and Safari.



2. Then you must add to your browser the extension.



The **Soffid Password Manager extension** will be installed in your browser and you can begin to use it.