

# How to install Soffid using Windows native authentication in SQL Server?

## Autenticación NTLM para SQL Server

### Soffid Versions

To install Soffid using Windows native authentication in SQL Server you will need an specific or higher versions of Console and Sync Server:

- Console 3.6.36 or higher
- Sync server 3.6.26 or higher

You can check the lastest versions in the download area:

<https://download.soffid.com/download/enterprise/>

## Steps

## Prerequisites

- Install SQL Server and create the soffid database.
- Install Java JDK11.

# Install and config Soffid Console

## 1.- Install Soffid Console

Open the installation file, Windows Installer Package (.msi). It will create the operating system level service and will start it. After some seconds, the installation wizard will be up and running in port 8080.

If the console was installed previously, you will need to update the system.properties file. You will have to add the parameters **;integratedSecurity\=true;trustServerCertificate\=true**

### system.properties file

You can find this file in ...\\Soffid\\IAM-Console\\conf

```
#Configured from soffid startup wizard
#Wed Apr 02 11:31:01 CEST 2025
dbMaxConnections=200
hostName=localhost
dbValidationQuery=select 1 from sysobjects
dbDriverString=sqlserver
dbPasswordCipher=com.soffid.iam.tomcat.SoffidPasswordCipher
openejb.validation.output.level=VERBOSE
tomEE.serialization.class.blacklist=*
tomEE.serialization.class.whitelist=org.apache.openejb
openejb.deploymentId.format={appId}-{ejbClass}
org.apache.johnzon.buffer-strategy=BY_INSTANCE
dbDriverClass=com.microsoft.sqlserver.jdbc.SQLServerDriver
soffid.server.port=8080
dbUser=DOMAIN\\Administrator
dbStatus=1
dbDriverUrl=jdbc:sqlserver\\://141.94.164.195\\:1443;databaseName\\=soffid02;integratedSecurity\\=true;trustServerCertificate\\=true
dbPassword=xxxxxx\\=\\=
```

## 2.- Configure the Soffid Console service

- Stop the Soffid Console service.
- Update the service to use the domain admin account and password.
- Start the Soffid Console service.

## Update Service Logon

The screenshot shows the Windows Services console with the 'Soffid 3 IAM Console' service selected. The service is currently running with an automatic startup type and is configured to log on as 'Local System'. A context menu is open over the service, showing options like 'Stop the service' and 'Restart the service'. The 'Soffid 3 IAM Console Properties' dialog box is also open, showing the 'Log On' tab. The 'Log on as:' section is set to 'This account:' with the username 'owalest\Administrator' and a password field. The 'Allow service to interact with desktop' checkbox is checked. The 'OK' button is highlighted.

## 3.- Configure the Soffid Console

- Go to <http://localhost:8080>
- Click the configure button
- Fill in the parameter to connect: It will be mandatory to add the properties **`;integratedSecurity=true;trustServerCertificate=true`** to the URL
- Click the connect button

## Configure Soffid Console

The screenshot shows a web browser window with the address bar displaying 'localhost:8080/configure/index.html'. The page features the Soffid logo at the top, which includes the text 'soffid' in a stylized font and 'identity and access management' in smaller text below it. The main heading is 'Setup wizard'. Under the heading, there are two sections: 'Web server' and 'Database'. The 'Web server' section has a 'Host name' field with the value 'localhost'. The 'Database' section has fields for 'User name' (owatest\Administrator), 'Password' (masked with dots), 'Driver' (MS SQL Server), and 'URL' (jdbc:sqlserver://141.94.164.195:1443;databaseName=soffid02;integratedSe). A 'Connect' button is located at the bottom of the database configuration fields.

# Install and config Sync Server

## 1.- Install Soffid Sync Server

Open the installation file Windows Installer Package (.msi). It will install the software and will execute the installation wizard.

## 2.- Configure Soffid SyncServer

The installation wizard will ask to configure the Sync Server.

It will be mandatory to add the parameters

**;integratedSecurity=true;trustServerCertificate=true** to the connection to database URL

### seycon.properties file

You can find this file in ...\\Soffid\\IAM-Sync\\conf

```
#Soffid autogenerated file
#Wed Apr 02 11:46:45 CEST 2025
password=xxxxxxx
hostname=WIN-DESK-01
serverlist=https://WIN-DESK-01:1760/
port=1760
sslkey=xxxxxxxxxxxx
```

user=xxxxx.lab\\Administrator

rol=server

java\_opt=-Xmx512m

db=jdbc\:sqlserver\\://141.94.164.195\:1443;databaseName\=soffid02;integratedSecurity\=true;trustServerCertificate\=true

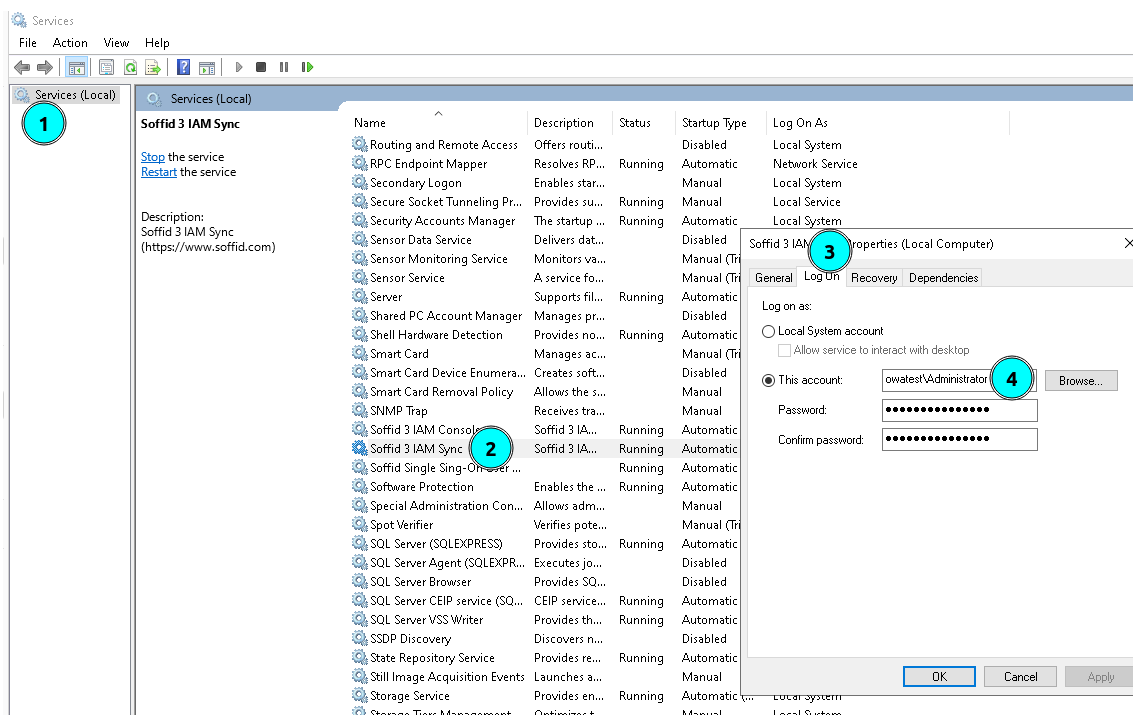
url=https\\://WIN-DESK-01\:1760/

autoupdate=true

### 3.- Configure the Soffid SyncServer service

- Stop the Soffid Sync Server service.
- Update the service to use the domain admin account and password.
- Start the Soffid Sync Server service.

#### Update Service Logon



Revision #10

Created 2 April 2025 13:30:19 by pgarcia@soffid.com

Updated 10 April 2025 06:29:28 by pgarcia@soffid.com