
CAS architecture

Introduction

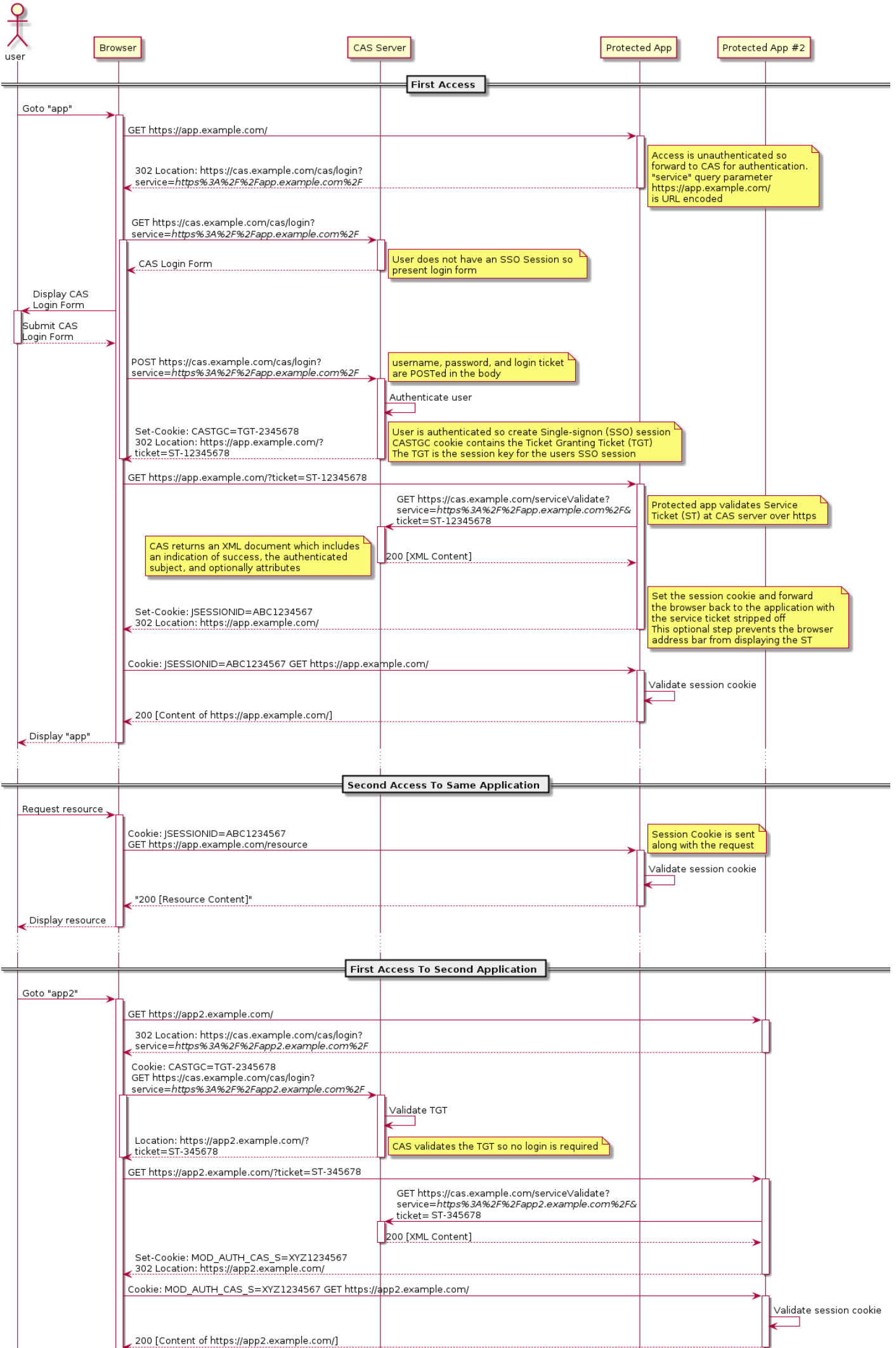
The CAS is a Single Sign On protocol for the web. This protocol allows users to access multiple applications by providing their credentials.

The response will be a JSON or XML

Single Log-in

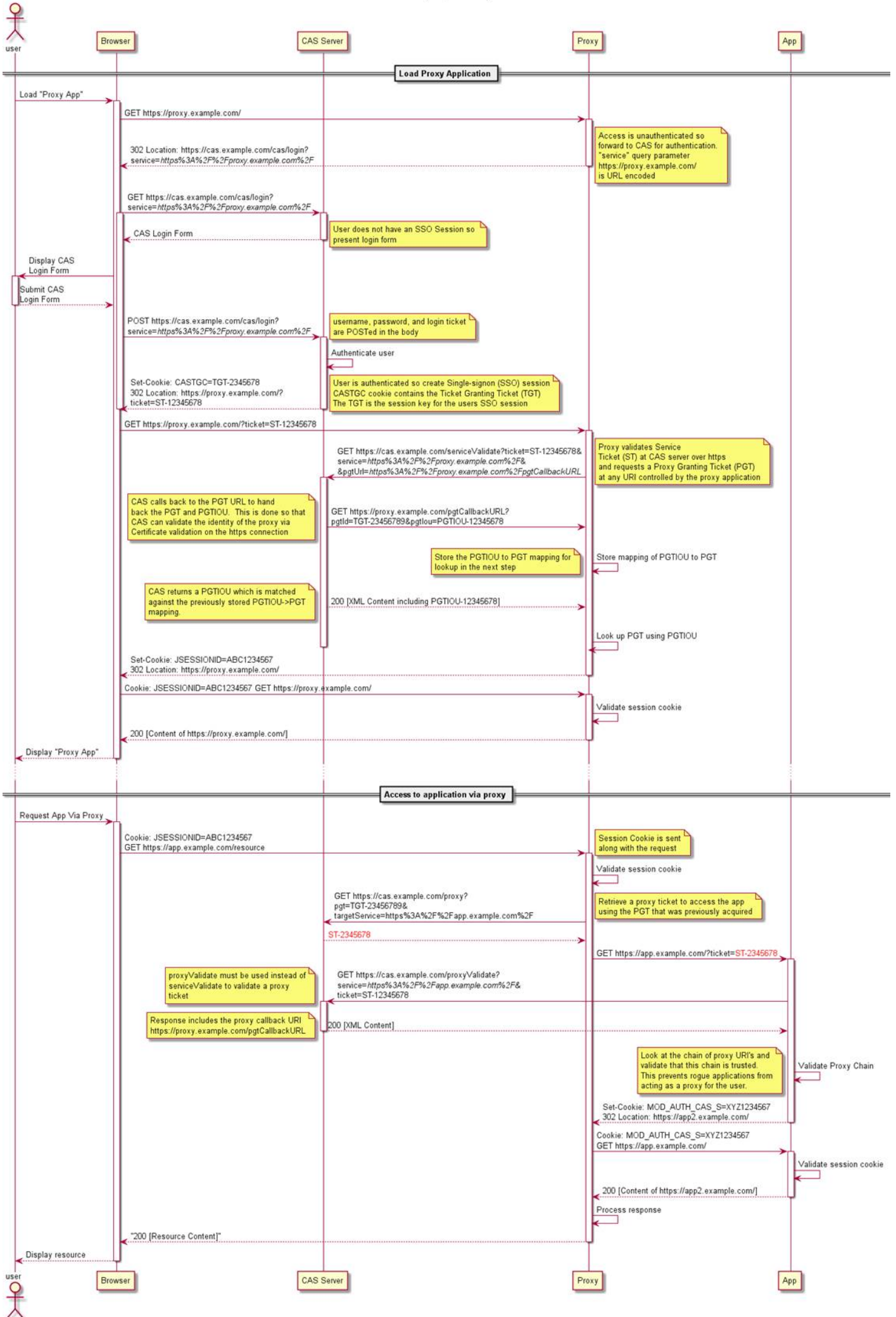
The single log-in is usually initiated by the application server. The typical UML use case is as follows:

CAS Browser Single-Signon Sequence Diagram



Proxy web flow diagram

CAS Proxy Sequence Diagram



https://en.wikipedia.org/wiki/Central_Authentication_Service

Revision #5

Created 24 August 2022 07:47:42

Updated 25 August 2022 06:22:24