

Windows Administrator access

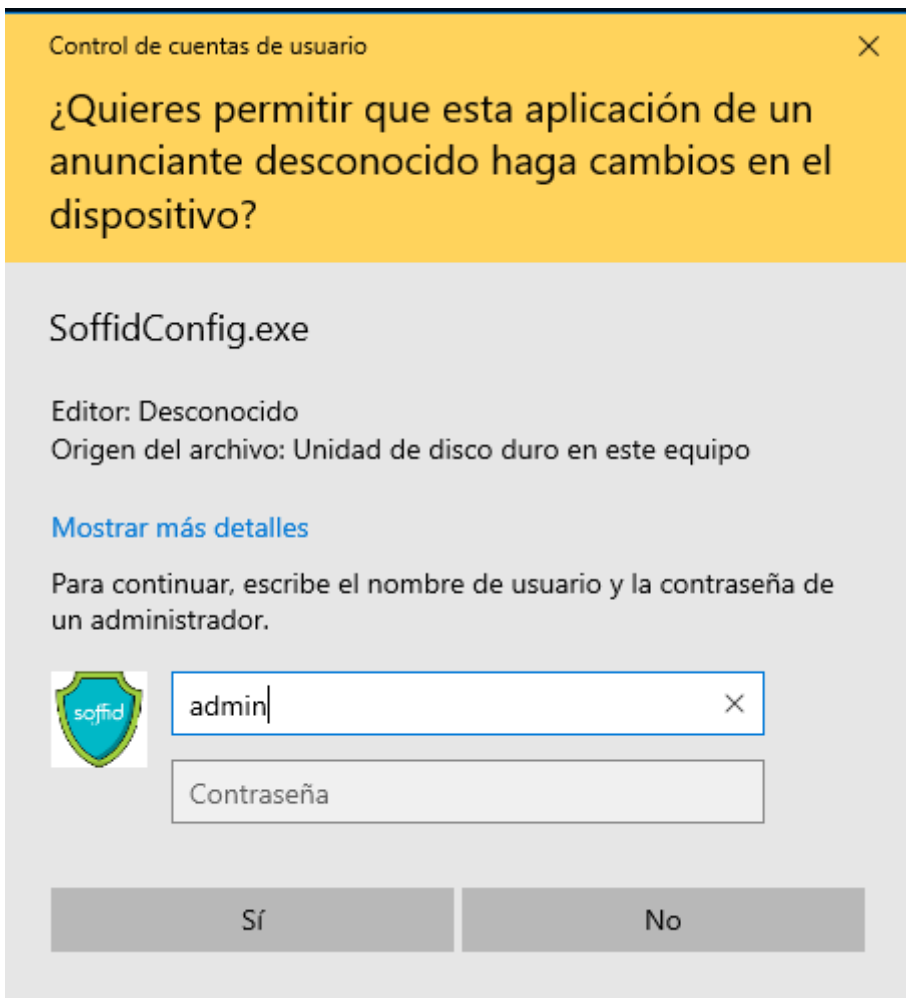
How to access?

For domain member hosts, ESSO will remove all existing local accounts except for those with a dependant service. So, in order to access with administrator privileges, user must use a domain account with local administrator privilege, or either an authorized Soffid user.

There are three different ways to grant this kind of authorization to a user using Soffid console:

1. Grant a global authorization (host:support). In this case, user can admin any host.
2. Using a network scope authorization. This kind of authorization can be granted on network management screen. Administration authorization can be granted for any host belonging to a network or for a restricted group of them.
3. Using a host scope authorization. This kind of authorization can be granted on host management screen for specified time period.

Through a workflow request. User asks for administration approval using "Request to administer a workstation" workflow. Soffid administrator can deny or approve the request. After the specified time period, the permission will be revoked.

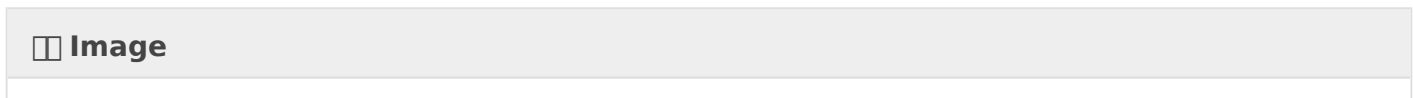


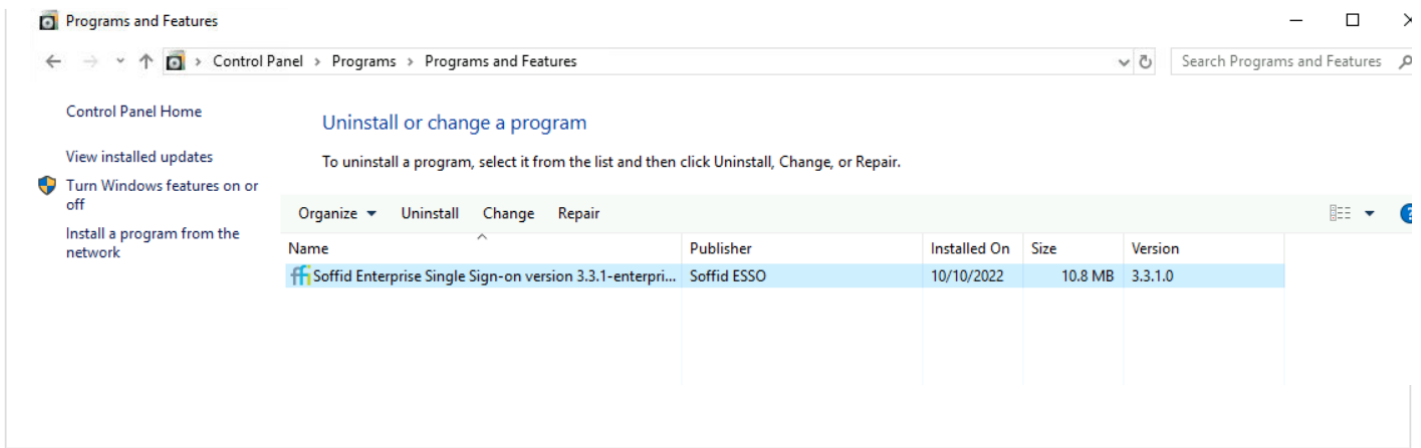
In order to access with administrator privileges user must log on with the soffid user code. It is not possible to do it with another account. Windows user code must match with Soffid user code.

Other operations

How to know the ESSO version?

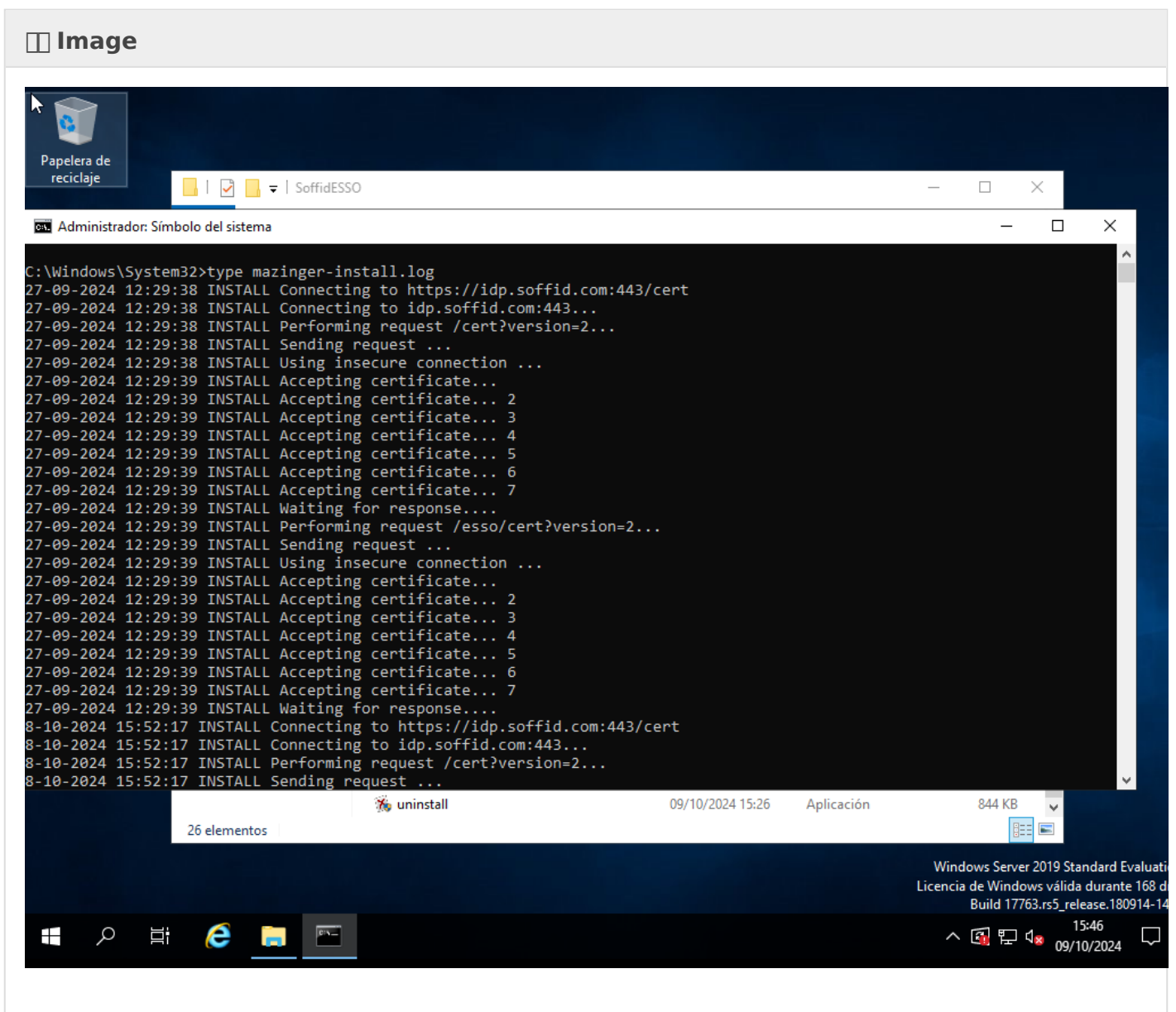
Windows Control Panel --> Add/Remove programs





How to check the log?

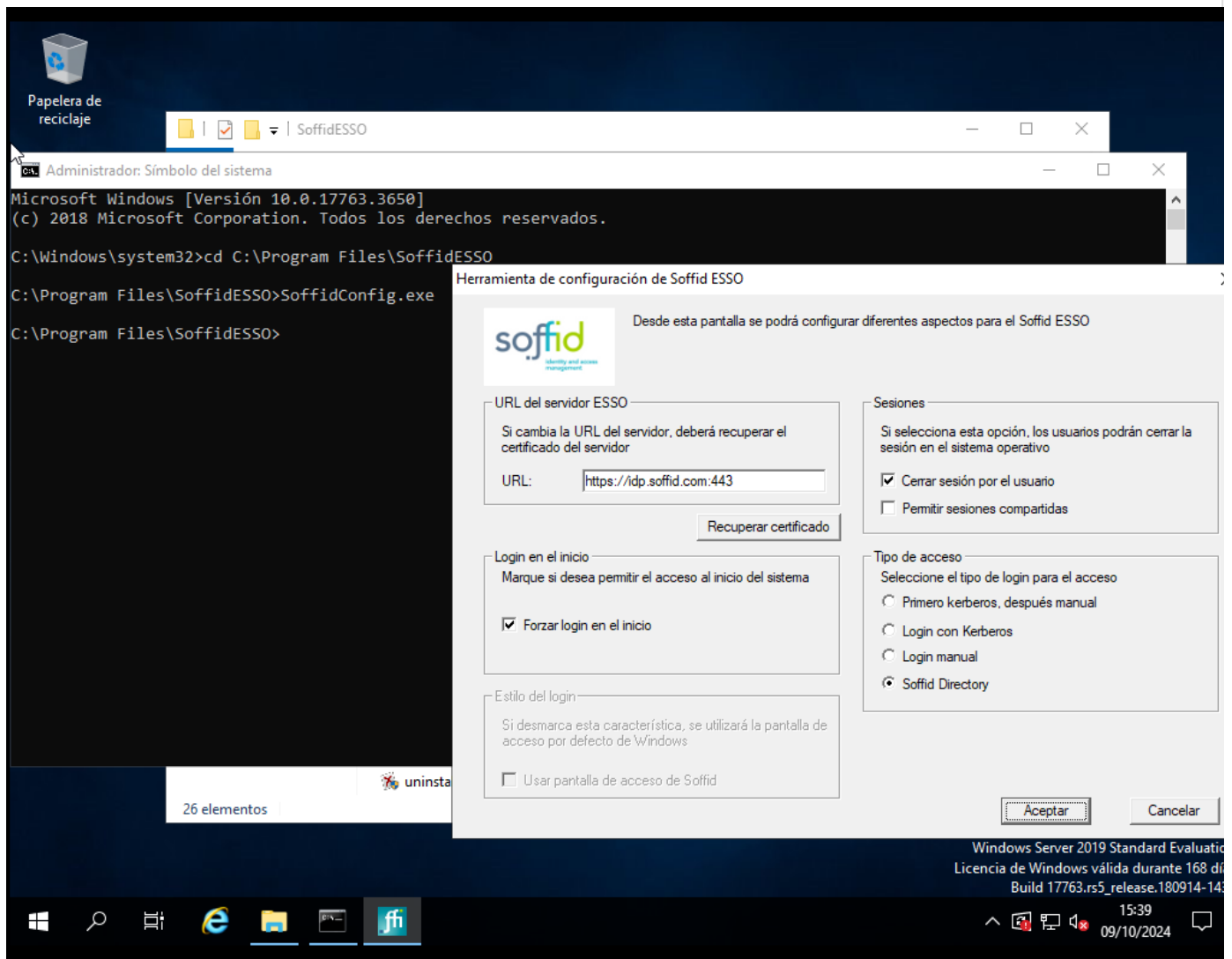
C:\Windows\System32\type mazinger-install.log



How to run the configuration?

C:\Program Files\SoffidESO\SoffidConfig.exe

Image



How to check the status?

C:\Program Files\SoffidESO>Shirokabuto debug

Image

```
Administrador: Símbolo del sistema - ShiroKabuto debug
C:\Program Files\SoffidESSO>ShiroKabuto debug
Executing manually
Locating user ShiroKabuto
Updating user ShiroKabuto
ui2->name = SoffidLocalAdmin
ui2->password_age = 299 (0 days)
Listening on port 49762
Press enter to stop
System is ONLINE
Value.length = 13072
Value.length = 9804
Received connection from 127.0.0.1:49762
Got line VALIDATE pgarcia asdasdas
En validate password
Checking connection
Checking connection is online
Checking online
Password = asdasdas
Password session startup
Password session startup result: 2
Sending DENIED Incorrect password
End process
Received connection from 127.0.0.1:49762
Got line VALIDATE pgarcia 
En validate password
Checking connection
Checking connection is online
Checking online
Password = 
Password session startup
11-11-2024 11:47:54 INFO Received push authentication
Waiting for push
Sending WAITPUSH https://download.soffid.com/doc/push-images/birds/70.jpg
Sending ENDPUSH
Password session startup result: 1
No domain
Checking local user pgarcia
FOUND
Set account expiration
Success !!!
Sending SUCCESS
End process
```

How to stop and start Shirokabuto?

```
C:\Program Files\SoffidESSO>net stop Shirokabuto
```

```
C:\Program Files\SoffidESSO>net start Shirokabuto
```

Revision #10

Created 25 May 2021 13:32:07 by pgarcia@soffid.com

Updated 19 November 2024 08:20:56 by dcompany@soffid.com