

# ESSO Manuals

Documentation about Windows user access, Linux user access and Admin access

- [Windows Administrator access](#)
- [Linux Administrator access](#)
- [Windows user access](#)
- [Linux User access](#)

# Windows Administrator access

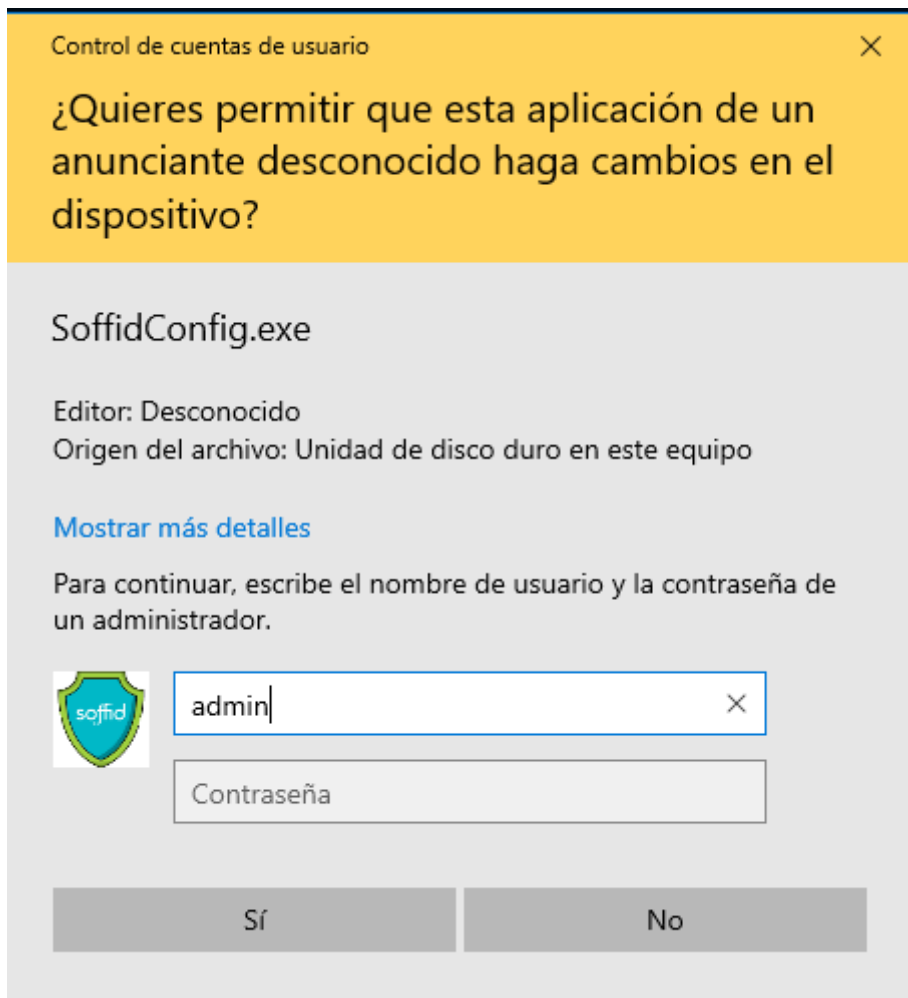
## How to access?

For domain member hosts, ESSO will remove all existing local accounts except for those with a dependant service. So, in order to access with administrator privileges, user must use a domain account with local administrator privilege, or either an authorized Soffid user.

There are three different ways to grant this kind of authorization to a user using Soffid console:

1. Grant a global authorization (host:support). In this case, user can admin any host.
2. Using a network scope authorization. This kind of authorization can be granted on network management screen. Administration authorization can be granted for any host belonging to a network or for a restricted group of them.
3. Using a host scope authorization. This kind of authorization can be granted on host management screen for specified time period.

Through a workflow request. User asks for administration approval using "Request to administer a workstation" workflow. Soffid administrator can deny or approve the request. After the specified time period, the permission will be revoked.



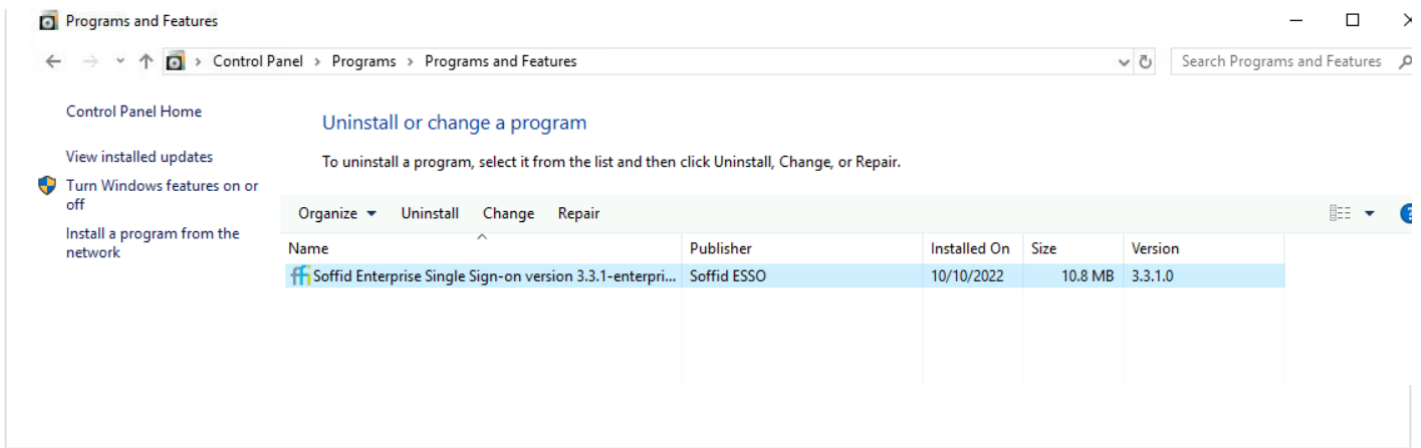
In order to access with administrator privileges user must log on with the soffid user code. It is not possible to do it with another account. Windows user code must match with Soffid user code.

## Other operations

### How to know the ESSO version?

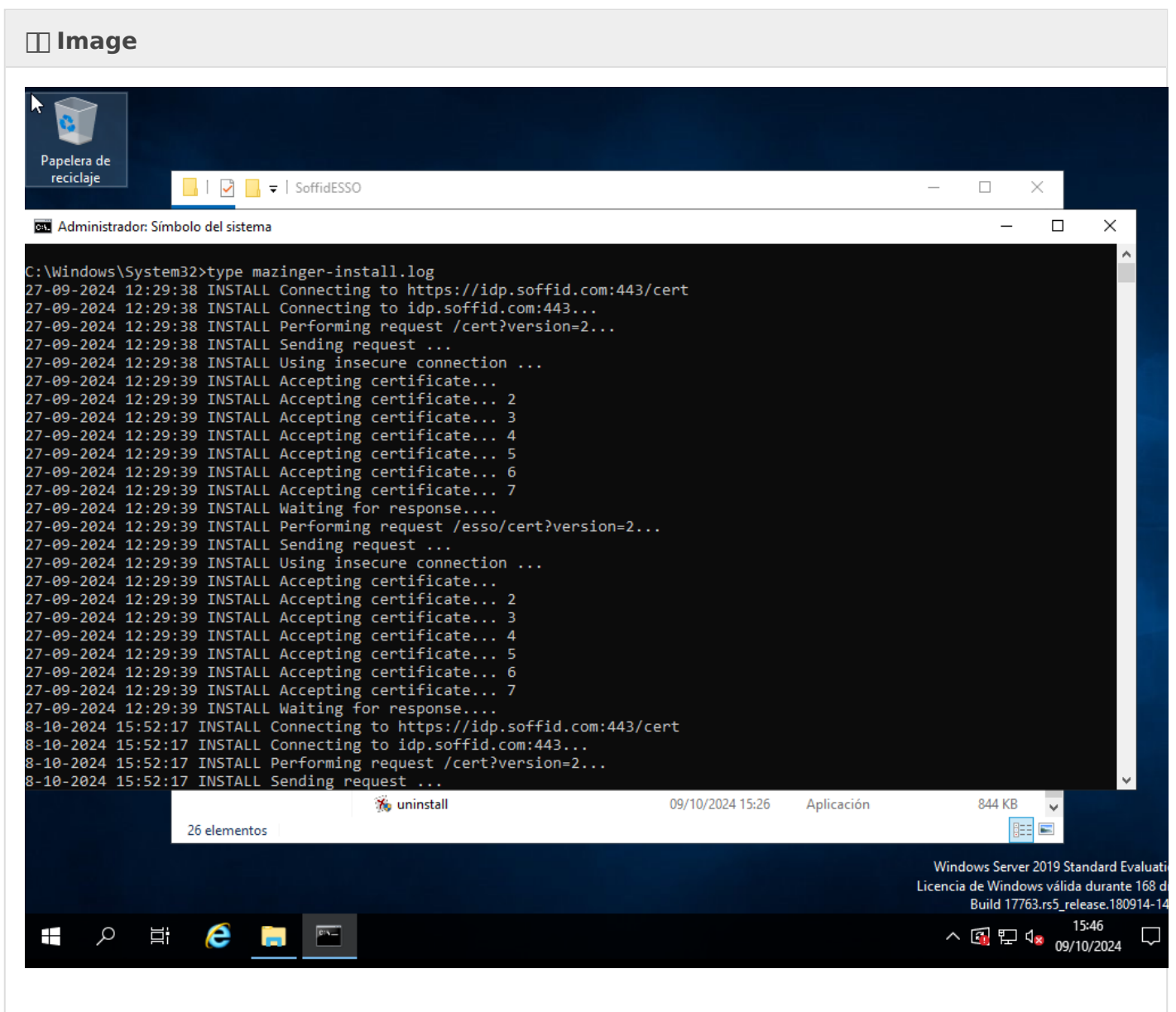
Windows Control Panel --> Add/Remove programs

 Image



## How to check the log?

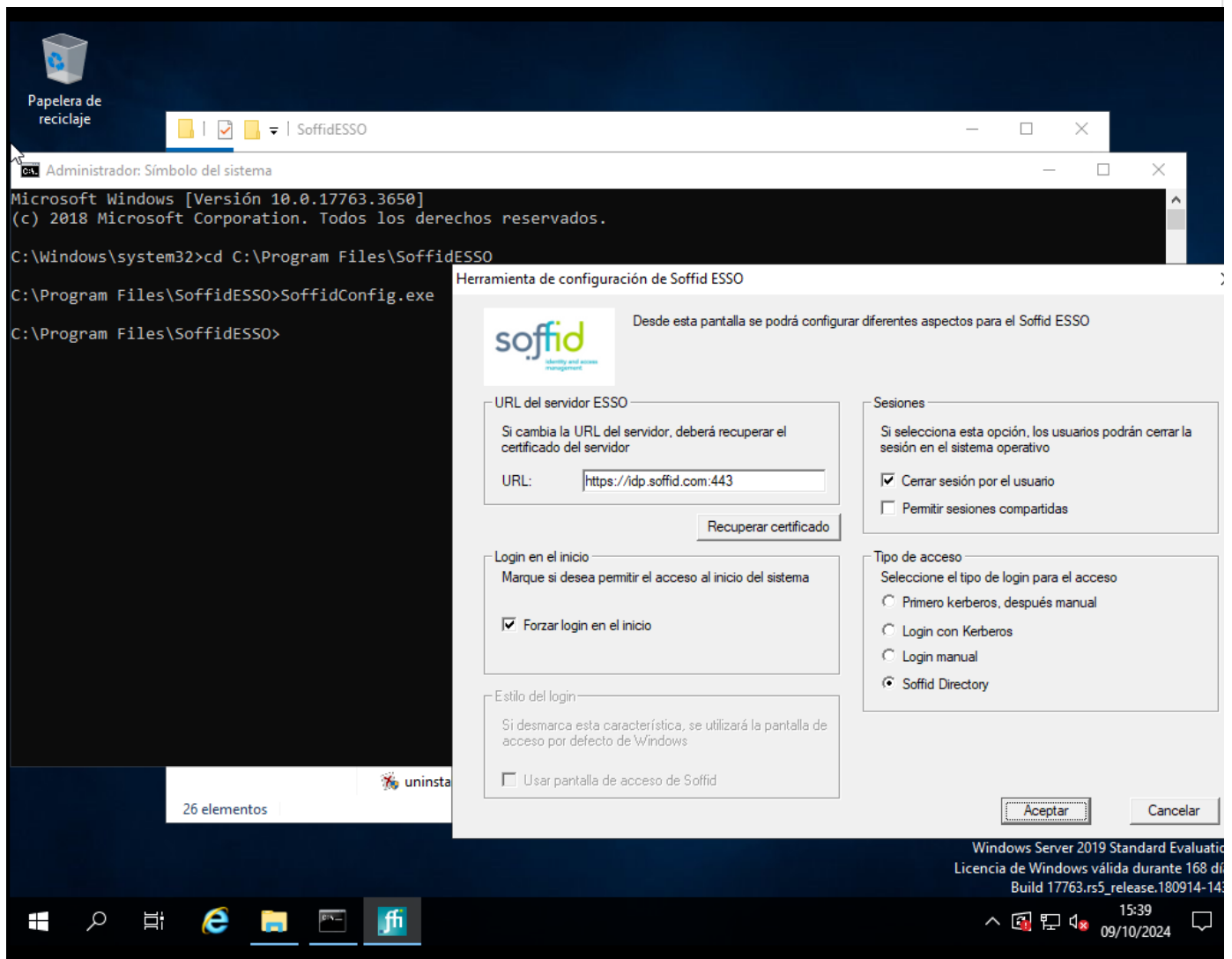
C:\Windows\System32\type mazinger-install.log



# How to run the configuration?

C:\Program Files\SoffidESO\SoffidConfig.exe

## Image



# How to check the status?

C:\Program Files\SoffidESO>Shirokabuto debug

## Image

```
Administrador: Símbolo del sistema - ShiroKabuto debug
C:\Program Files\SoffidESSO>ShiroKabuto debug
Executing manually
Locating user ShiroKabuto
Updating user ShiroKabuto
ui2->name = SoffidLocalAdmin
ui2->password_age = 299 (0 days)
Listening on port 49762
Press enter to stop
System is ONLINE
Value.length = 13072
Value.length = 9804
Received connection from 127.0.0.1:49762
Got line VALIDATE pgarcia asdasdas
En validate password
Checking connection
Checking connection is online
Checking online
Password = asdasdas
Password session startup
Password session startup result: 2
Sending DENIED Incorrect password
End process
Received connection from 127.0.0.1:49762
Got line VALIDATE pgarcia 
En validate password
Checking connection
Checking connection is online
Checking online
Password = 
Password session startup
11-11-2024 11:47:54 INFO Received push authentication
Waiting for push
Sending WAITPUSH https://download.soffid.com/doc/push-images/birds/70.jpg
Sending ENDPUSH
Password session startup result: 1
No domain
Checking local user pgarcia
FOUND
Set account expiration
Success !!!
Sending SUCCESS
End process
-
```

## How to stop and start Shirokabuto?

```
C:\Program Files\SoffidESSO>net stop Shirokabuto
```

```
C:\Program Files\SoffidESSO>net start Shirokabuto
```

# Linux Administrator access

## How to access?

For domain member hosts, ESSO will remove all existing local accounts except for those with a dependant service. So, in order to access with administrator privileges, user must use a domain account with local administrator privilege, or either an authorized Soffid user.

There are three different ways to grant this kind of authorization to a user using Soffid console:

1. Grant a global authorization (host:support). In this case, user can admin any host.
2. Using a network scope authorization. This kind of authorization can be granted on network management screen. Administration authorization can be granted for any host belonging to a network or for a restricted group of them.
3. Using a host scope authorization. This kind of authorization can be granted on host management screen for specified time period.

Through a workflow request. User asks for administration approval using "Request to administer a workstation" workflow. Soffid administrator can deny or approve the request. After the specified time period, the permission will be revoked.

In order to acces with administrator privileges user must log on with the soffid user code. It is not possible to do it with another account. Windows user code must match with Soffid user code.

## Other operations

### How to know the ESSO version?

```
dpkg -l soffidesso
```

 **Image**

```
pgarcia@soffid:~$ dpkg -l soffidesso
Deseado=desconocido(U)/Instalar/eliminaR/Purgar/retener(H)
| Estado=No/Inst/ficheros-Conf/desempaquetado/medio-conf/medio-inst(H)/espera-d
|/ Err?=(ninguno)/requiere-Reinst (Estado,Err: mayúsc.=malo)
|/ Nombre          Versión          Arquitectura Descripción
+++-----+-----+-----+-----+
ii  soffidesso      3.3.3-enterprise amd64          Soffid ESS0
lines 1-6/6 (END)
```

## How to check the log?

```
/var/log$ sudo tail syslog
```

```
/var/log$ sudo cat syslog
```

## How to change debug level?

Edit the file `/etc/mazinger/config` and set `debugLevel` to 3

```
nano /etc/mazinger/config
```

 **Image**



```
GNU nano 6.2 /etc/mazinger/config
# Fitxer autogenerat a les 23-05-2024 15:29:39
MazingerVersion:3.4.2-enterprise
debugLevel:3
SSOServer:iam3.soffid.com
seycon.https.port:760
CertificateFile:/etc/mazinger/seycon.pem
serialNumber:
localUsers:pgarcia
soffid.hostname.format:
soffid.esso.protocol:
QueryServer:
PreferredServers:
seycon.https.alternate.port:
SSOSoffidAgent:
EnableCloseSession:
ForceStartupLogin:
soffid.esso.session.keepalive:15
soffid.esso.idleTimeout:
soffid.esso.sharedWorkstation:
AutoSSOSystem:sso
AutoSSOURL:https://iam3.soffid.com
LogonEntry:Logon
LogonEntryRoot:LogonRoot
OfflineEntry:
certs
```

[ Directory '/etc/mazinger' is not writable ]

^G Help ^O Write Out ^W Where Is ^K Cut ^T Execute ^C Location M-U Undo  
^X Exit ^D Read File ^V Replace ^U Paste ^J Justify ^\_ Go To Line M-E Redo

## How to login using the command line?

Raise permissions to super users:

```
sudo -i
```

Login with your Soffid user

```
login userName
```

 **Image**

```
pgarcia@soffid:~$ sudo -i
root@soffid:~# login pgarcia
Password:
14-10-2024 08:54:21 DEBUG Connecting to sync server to fetch valid certificates
14-10-2024 08:54:21 DEBUG Server list = {iam3.soffid.com}
14-10-2024 08:54:21 DEBUG Server {iam3.soffid.com}
14-10-2024 08:54:21 DEBUG Performing request https://iam3.soffid.com:760/cert?version=2....
14-10-2024 08:54:21 DEBUG Using certs /etc/mazinger/certs.pem
14-10-2024 08:54:22 DEBUG Invoking /passwordLogin?action=prestart&user=pgarcia&password=Avila19796@&clientIP=&cardSupport=3&domain=&serial=soffid.pat.lab-1630916289-fwo2BHQCS9zLDgbXXtJ0z1Nil0CiCN9g9nW8skABhyMjSl6pTD
14-10-2024 08:54:22 DEBUG Performing request https://iam3.soffid.com:760/passwordLogin?action=prestart&user=pgarcia&password=Avila19796@&clientIP=&cardSupport=3&domain=&serial=soffid.pat.lab-1630916289-fwo2BHQCS9zLDgbXXtJ0z1Nil0CiCN9g9nW8skABhyMjSl6pTD....
14-10-2024 08:54:22 DEBUG Using certs /etc/mazinger/certs.pem
14-10-2024 08:54:22 DEBUG Status = OK
Welcome to Ubuntu 22.04.5 LTS (GNU/Linux 6.8.0-45-generic x86_64)

 * Documentation:  https://help.ubuntu.com
 * Management:    https://landscape.canonical.com
 * Support:       https://ubuntu.com/pro

3 devices have a firmware upgrade available.
Run `fwupdmgtr get-upgrades` for more information.

El mantenimiento de seguridad expandido para Applications está desactivado

Se puede aplicar 1 actualización de forma inmediata.
Para ver estas actualizaciones adicionales, ejecute: apt list --upgradable

46 actualizaciones de seguridad adicionales se pueden aplicar con ESM Apps.
Aprenda más sobre cómo activar el servicio ESM Apps at https://ubuntu.com/esm

New release '24.04.1 LTS' available.
```

# Windows user access

## How to access?

When you try to connect to a Windows machine by using Soffid ESSO, you need to enter your user and password in the Windows login page.

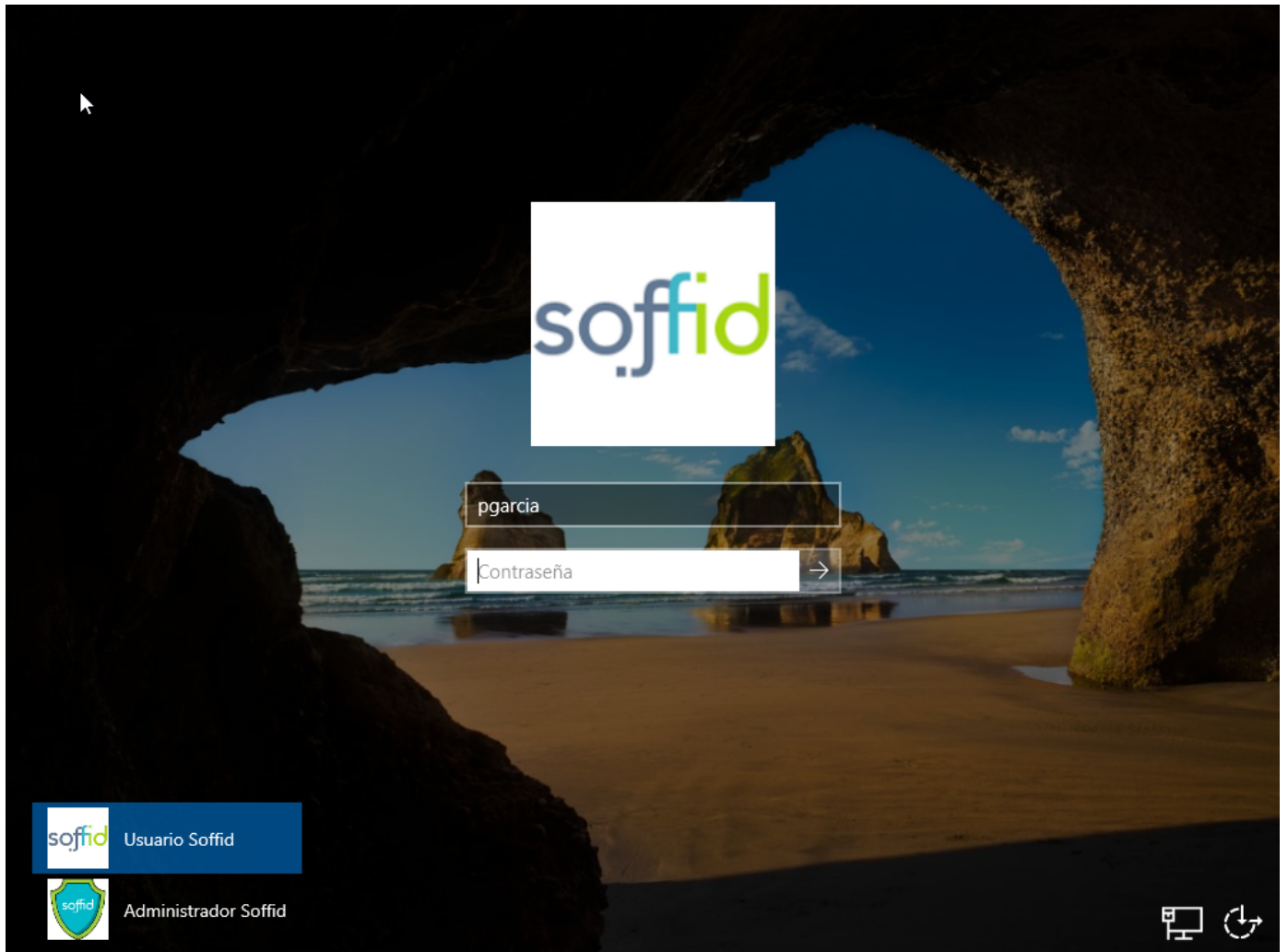
If the user does not exist in this machine, depending on the attribute "Create local accounts when there is no domain account" in Soffid ESSO configuration, a local user will be created or not.

- If the network is connected, depending on the Soffid ESSO configuration, a 2FA may be required, or you will be logged in directly.
- If the network is not connected, also, depending on the Soffid ESSO configuration, you connect to the machine. When the network is re-established, Soffid ESSO will ask for your credentials again.

For more information about how to configure Soffid ESSO you can visit [the ESSO profile page](#).

 **Image**

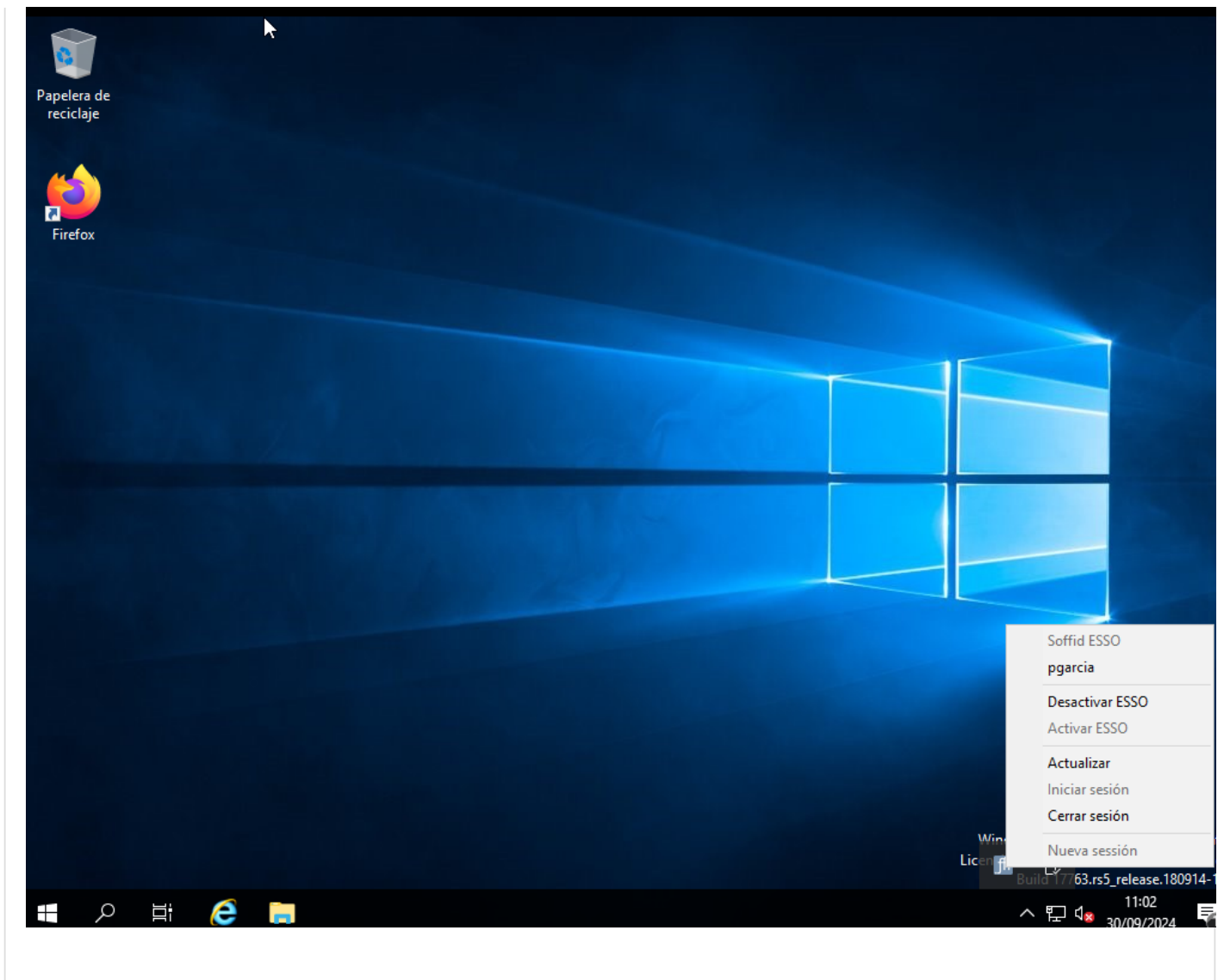
Credentials required



2FA required



Soffid ESSO options



# Esso Options

On a host with ESSO installed an icon with the Soffid Logo will appear on the Windows taskbar.

If the user clicks on the mouse's right button it will be able to do some different actions.

## Login

Allows you to open an ESSO session. In order to open an ESSO session, the user must enter user code and password. In order to reopen it, the user must enter user code and password again (unless Kerberos login succeeds)

## Logout

Allows you to close an ESSO session. On closing session, any SSO rules will be unloaded, so the user should enter the user and password on applications request.

## SSO Paused

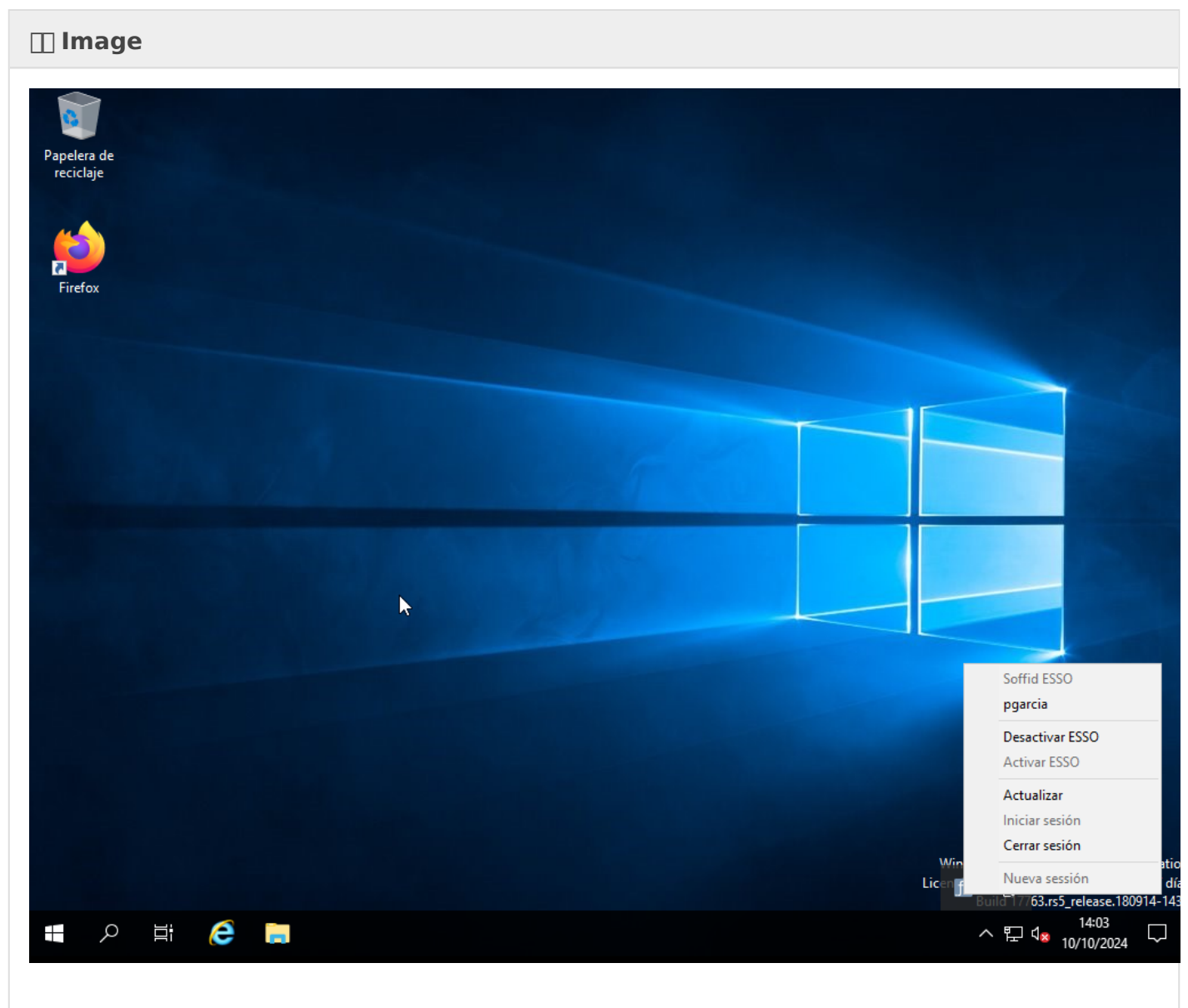
If the user disables ESSO, user and password will be required to execute any application, but ESSO session is still open on the server.

## SSO Enabled

In order to inject ESSO rules, Soffid ESSO must be enabled.

## Update rules

To update ESSO rules for the user account. ESSO will contact Soffid Synchronization server in order to get the Single Sign On rules for this account. Any granted permission or rule change will be applied immediately.



# Linux User access

## How to access?

When you try to connect to a Linux machine using Soffid ESSO, you will need to enter your username and password on the Linux login page.

If the user does not exists in this machine, depending on the attribute "Create local accounts when there is no domain account" in Soffid ESSO configuration, a local user will be created or not.

- If the network is connected, depending on the Soffid ESSO configuration, a 2FA may be required, or you will be logged in directly.
- If the network is not connected, also, depending on the Soffid ESSO configuration, you connect to the machine. When the network is re-established, Soffid ESSO will NOT ask for your credentials again in the Linux machine.

For more information about how to configure Soffid ESSO you can visit [the ESSO profile page](#).

 **Image**

Credentials required



lun 11:13



pgarcia

Password:

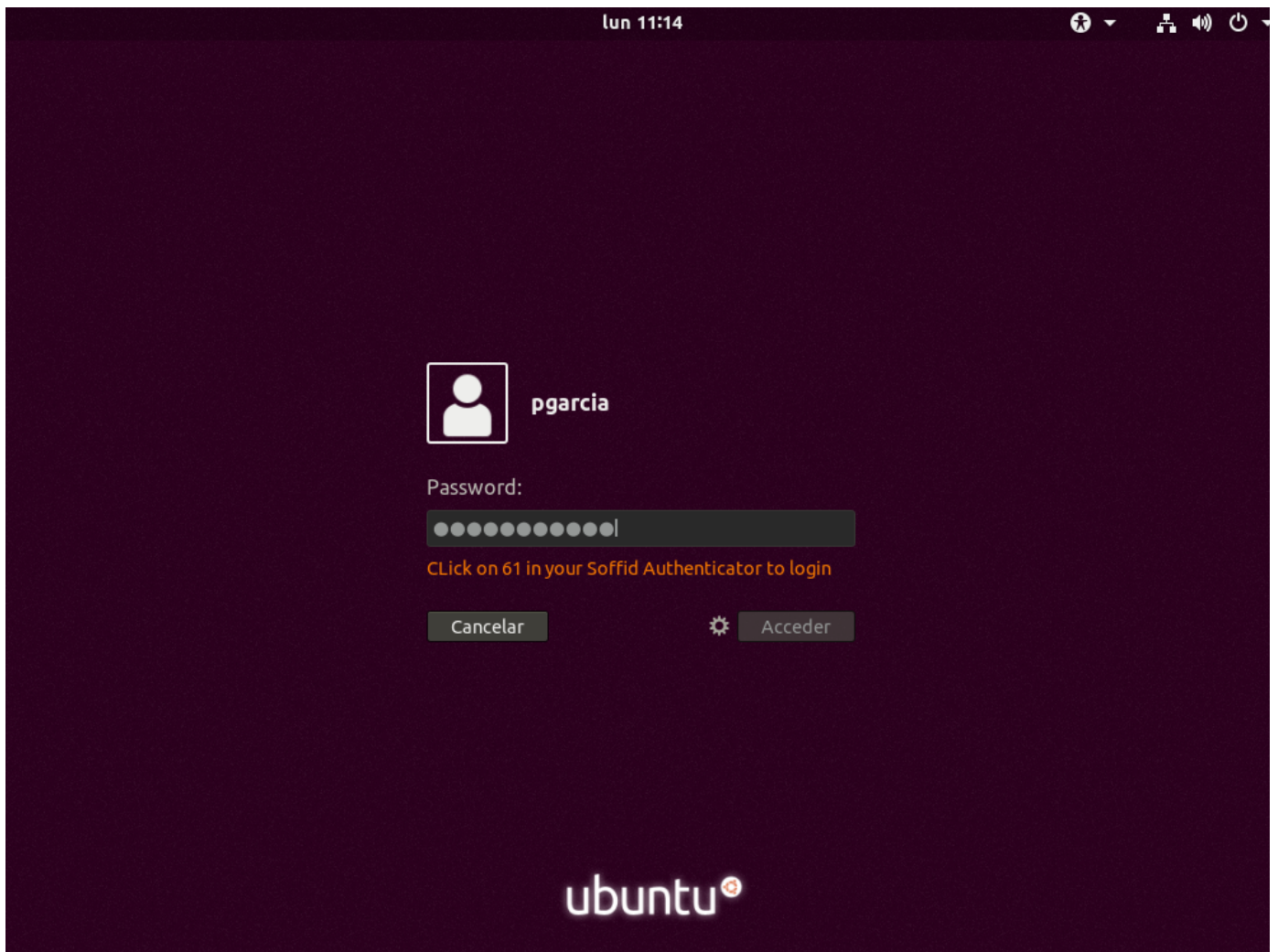
Cancelar



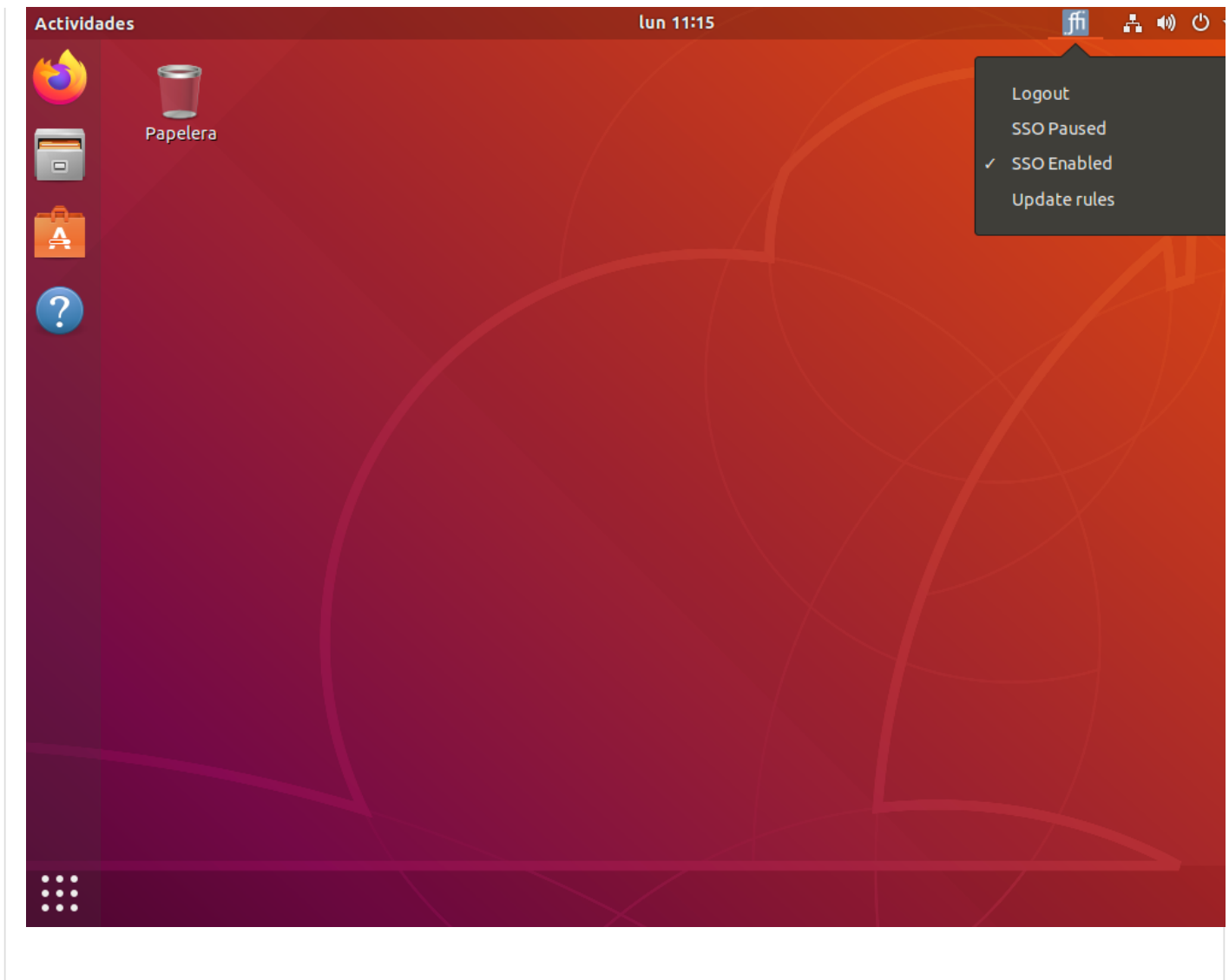
Acceder

ubuntu

2FA required



Soffid ESSO options



# Esso Options

On a host with ESSO installed an icon with the Soffid Logo will appear on the Windows taskbar.

If the user clicks on the mouse's right button it will be able to do some different actions.

## Login

Allows you to open an ESSO session. In order to open an ESSO session, the user must enter user code and password. In order to reopen it, the user must enter user code and password again (unless Kerberos login succeeds)

## Logout

Allows you to close an ESSO session. On closing session, any SSO rules will be unloaded, so the user should enter the user and password on applications request.

## SSO Paused

If the user disables ESSO, user and password will be required to execute any application, but ESSO session is still open on the server.

## SSO Enabled

In order to inject ESSO rules, Soffid ESSO must be enabled.

## Update rules

To update ESSO rules for the user account. ESSO will contact Soffid Synchronization server in order to get the Single Sign On rules for this account. Any granted permission or rule change will be applied immediately.

